

Better Care Fund - 2023/24

Performance Report

Month - December

Produced -8 February 2024

Health and Wellbeing Board Measures

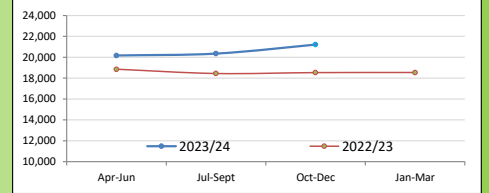
1: Total non-elective admissions into hospital (general and acute)

Definition: The total number of emergency admissions for people of all ages where an acute condition was the primary diagnosis, that would not usually require hospital admission.

Frequency / Reporting Basis: Monthly / Cumulative within quarter only

Source: MAR data (Monthly NHS England published hospital episode statistics)

Note: Data Source changed therefore data no longer uploaded to NHS Digital



Prior Year	2022/2023											
	Apr-22	May-22	Jun-22	Jul-22	Aug-22	Sep-22	Oct-22	Nov-22	Dec-22	Jan-23	Feb-23	Mar-23
In Month	6,117	6,531	6,208	6,472	6,376	6,365	6,528	6,879	6,725	6,461	6,271	6,573
In Quarter (cumulative)	-	-	18,856	-	-	19,213	-	-	20,132	-	-	19,305

Month -	2023/2024											
	Apr-23	May-23	Jun-23	Jul-23	Aug-23	Sep-23	Oct-23	Nov-23	Dec-23	Jan-24	Feb-24	Mar-24
In Month	6,477	6,879	6,816	6,849	6,826	6,677	6,990	7,172	7,054			
In Quarter	-	-	20,172	-	-	20,352	-	-	21,216	-	-	
Actual reduction (negative indicates an increase)	number	96	-402	63	-33	23	149	-313	-182	118		
	%	1.46%	-6.21%	0.92%	-0.48%	0.34%	2.18%	-4.79%	-2.65%	1.75%		
Performance												

2: Admissions to residential / nursing care homes - aged 65+ (ASCOF 2A part ii)

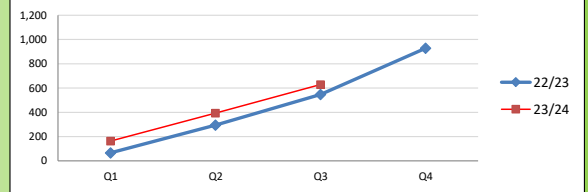
Definition: The total number of admissions to permanent residential or nursing care during the year (excluding transfers between homes unless the type of care has changed from temporary to permanent)

Frequency / Reporting Basis: Monthly / Cumulative YTD

Source: Mosaic data: Local Adult Care Monitoring (LTC admissions report & SALT return).

Note: Figure reported cumulatively.

This is a snapshot at reporting period end and may not be an accurate figure due to backdating of services



Prior Year	2022/2023											
	Apr-22	May-22	Jun-22	Jul-22	Aug-22	Sep-22	Oct-22	Nov-22	Dec-22	Jan-23	Feb-23	Mar-23
In Quarter			66						319			381
Cumulative YTD			66			294			547			928

Current Year	2023/2024											
	Apr-23	May-23	Jun-23	Jul-23	Aug-23	Sep-23	Oct-23	Nov-23	Dec-23	Jan-24	Feb-24	Mar-24
In Quarter			163			231			235			
Cumulative YTD			163			394			629			

3: % people (65+) at home 91 days after discharge from hospital into Reablement/rehabilitation (ASCOF 2B part 1) Includes NHS and Social Care service

Definition: The percentage of older people (within a 3 month sample period) discharged from an acute or non-acute hospital to their own home/residential or nursing care home/ extra care housing for rehabilitation, where the person is at home 91 days after their date of discharge from hospital.

Frequency / Reporting Basis: Quarterly

Source: Libertas Reablement data and LCH data

Note: The data combines LCH Data and ASC Reablement data but some people cannot be traced to a Mosaic number so these people are then classified as Not at Home. This accounts for 45 Persons, if these people are at home the measure will be 92%.

	22/23	2023/2024											
		Apr-23	May-23	Jun-23	Jul-23	Aug-23	Sep-23	Oct-23	Nov-23	Dec-23	Jan-24	Feb-24	Mar-24
Numerator	795			813			932			1,106			
Denominator	1,011			935			1121			1,180			
Value	79%			87%			83%			94%			

3a: % people (65+) at home 91 days after discharge from hospital into Reablement/rehabilitation - SOCIAL CARE REABLEMENT SERVICE ONLY
Definition: The percentage of older people (within a 3 month sample period) discharged from an acute or non-acute hospital to their own home/residential or nursing care home/ extra care housing for rehabilitation, where the person is at home 91 days after their date of discharge from hospital. Q1 data will be clients discharged between January-March, Q2 will be clients discharged between April-June etc.
Frequency / Reporting Basis: Quarterly
Source: Libertas Reablement
Note: This data comes from the Reablement Service but some people cannot be traced to a Mosaic number. These people are then classified as **Not at Home**.

	22/23 Social Care Only	2023/2024											
		Apr-23	May-23	Jun-23	Jul-23	Aug-23	Sep-23	Oct-23	Nov-23	Dec-23	Jan-24	Feb-24	Mar-24
Numerator	488			518			528			703			
Denominator	555			565			643			727			
Value	88%			92%			82%			97%			

3b: % people (65+) at home 91 days after discharge from hospital into Reablement/rehabilitation - COMMUNITY REHAB SERVICE ONLY
Definition: The percentage of older people (within a 3 month sample period) discharged from an acute or non-acute hospital to their own home/residential or nursing care home/ extra care housing for rehabilitation, where the person is at home 91 days after their date of discharge from hospital. Q1 data will be clients discharged between January-March, Q2 will be clients discharged between April-June etc.
Frequency / Reporting Basis: Quarterly
Source: Hospital
Note: This data is from LCH Data and some people cannot be traced to a Mosaic number. These people are then classified as **Not at Home**. This accounts for 45 Persons, if these people are at home the measure will be at 92%

	22/23 Social Care Only	2023/2024											
		Apr-23	May-23	Jun-23	Jul-23	Aug-23	Sep-23	Oct-23	Nov-23	Dec-23	Jan-24	Feb-24	Mar-24
Numerator	307			295			404			403			
Denominator	456			370			478			453			
Value	67%			80%			85%			89%			

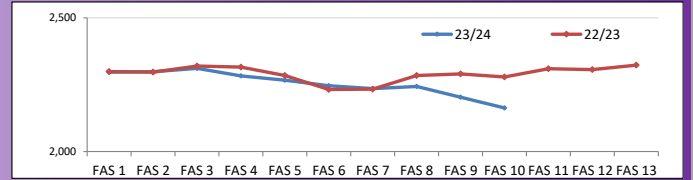
3c: % people (65+) at home 91 days after discharge from hospital into Reablement/rehabilitation - OFFER RATE ONLY
Definition: The percentage of older people (within a 3 month sample period) discharged from an acute or non-acute hospital to their own home/residential or nursing care home/ extra care housing for rehabilitation, where the person is at home 91 days after their date of discharge from hospital. Q1 data will be clients discharged between January-March, Q2 will be clients discharged between April-June etc.
Frequency / Reporting Basis: Quarterly

	22/23 Offer Rate Offer Only	2023/2024											
		Apr-23	May-23	Jun-23	Jul-23	Aug-23	Sep-23	Oct-23	Nov-23	Dec-23	Jan-24	Feb-24	Mar-24
Actual	-			-			-			-			-
Target	-			-			-			-			-
Performance	-			-			-			-			-

iBCF Measures

4: Number of Home Care packages provided in the reporting year

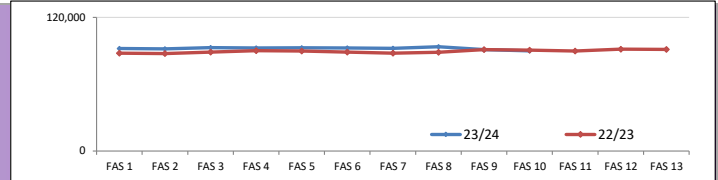
Definition: Number of all clients who have received a permanent home care package per month
Frequency / Reporting Basis: Split by Financial Activity Statement (April -March)
Source: Brokerage weekly service returns
Note: Changed from Monthly breakdown to Financial Activity Statement due to how the data is recorded. **Please see end of document for a explanation of the FAS Weeks**



Prior Year		2022/2023												
		FAS 1	FAS 2	FAS 3	FAS 4	FAS 5	FAS 6	FAS 7	FAS 8	FAS 9	FAS 10	FAS 11	FAS 12	FAS 13
Clients in receipt of homecare (per month)		2,299	2,297	2,320	2,316	2,284	2,232	2,233	2,284	2,290	2,279	2,310	2,306	2,323
Current Year		2023/2024												
		FAS 1	FAS 2	FAS 3	FAS 4	FAS 5	FAS 6	FAS 7	FAS 8	FAS 9	FAS 10	FAS 11	FAS 12	FAS 13
Clients in receipt of homecare (per month)		2,297	2,298	2,311	2,283	2,267	2,246	2,235	2,243	2,203	2,163			

5: Total number of paid hours of Home Care provided in the quarter

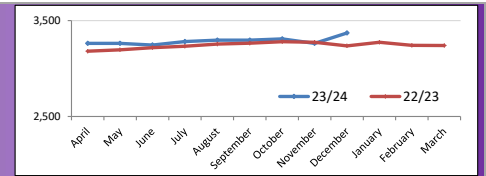
Definition: Number of all paid hours of homecare delivered per month
Frequency / Reporting Basis: Split by Financial Activity Statement (April -March)
Source: Brokerage weekly service returns
Note: Changed from Monthly breakdown to Financial Activity Statement due to how the data is recorded. **Please see end of document for a explanation of the FAS Weeks**



Prior Year		2022/2023												
		FAS 1	FAS 2	FAS 3	FAS 4	FAS 5	FAS 6	FAS 7	FAS 8	FAS 9	FAS 10	FAS 11	FAS 12	FAS 13
Hours Delivered		87,847	87,534	88,785	90,157	89,851	88,787	87,930	88,655	91,125	90,548	89,816	91,495	91,313
Current Year		2023/2024												
		FAS 1	FAS 2	FAS 3	FAS 4	FAS 5	FAS 6	FAS 7	FAS 8	FAS 9	FAS 10	FAS 11	FAS 12	FAS 13
Hours Delivered		91,805	91,493	92,932	92,508	92,707	92,485	92,178	93,660	91,176	89,978			

6: Number of funded care home placement at the end of the period

Definition: Number of clients that are in a social care wholly or part funded care home placement at the end of the period.
Frequency / Reporting Basis: Monthly / Snapshot
Source: BO Report - Long Term Care (Summary)



Prior Year		2022/2023												
		Apr-22	May-22	Jun-22	Jul-22	Aug-22	Sep-22	Oct-22	Nov-22	Dec-22	Jan-23	Feb-23	Mar-23	
Care Home Placements (YTD)		3,181	3,195	3,218	3,233	3,255	3,265	3,280	3,274	3,237	3,273	3,242	3,240	
Current Year		2023/2024												
		Apr-23	May-23	Jun-23	Jul-23	Aug-23	Sep-23	Oct-23	Nov-23	Dec-23	Jan-24	Feb-24	Mar-24	
Care Home Placements (YTD)		3,263	3,263	3,245	3,282	3,297	3,296	3,310	3,263	3,371				

7: Number of newly funded clients with LD

Definition: Number of LD starters that have started a new service each month.
Frequency / Reporting Basis: Monthly
Source: Finance Team - Adult Care & Community Wellbeing

		2023/2024											
by Age Group		Apr-23	May-23	Jun-23	Jul-23	Aug-23	Sep-23	Oct-23	Nov-23	Dec-23	Jan-24	Feb-24	Mar-24
18-25		0	0	0	0	0	0	4	2	3			
26-40		7	6	4	7	10	7	2	0	1			
41-64		2	1	0	2	3	0	1	1	0			
65+		0	1	0	0	0	0	0	0	0			
In month		9	8	4	9	13	7	7	3	4			
In Quarter (cumulative)		9	17	21	9	22	29	36	39	43			

Local Measures

8. Number of Reablement Hours Delivered in the period

Definition: Total number of face to face contact hours delivered

Frequency / Reporting Basis: Monthly

Source: Reablement Provider Contract KPI's

Current Year	2022/23	2023/2024											
		Apr-23	May-23	Jun-23	Jul-23	Aug-23	Sep-23	Oct-23	Nov-23	Dec-23	Jan-24	Feb-24	Mar-24
Hours delivered (in month)		12,321	12,987	12,269	13,068	11,959	12,763	13,529	14,655	14,501			
Hours delivered (in quarter)	147,109	12,321	25,308	37,577	13,068	25,027	37,790	13,529	28,184	42,685			
Hours delivered (YTD)		12,321	25,308	37,577	50,645	62,604	75,367	88,896	103,551	118,052			

9. Reablement: % of people reabled to no service, or a lower service (ASCOF 2D)

Definition: % of concluded episodes of reablement for NEW clients where the sequel to reablement is no support or support of a lower level

Frequency / Reporting Basis: Quarterly / Cumulative YTD

Source: Short & Long Term Return (SALT STS002a)/(CBP 124)

Current Year	2022/23	2023/2024											
		Apr-23	May-23	Jun-23	Jul-23	Aug-23	Sep-23	Oct-23	Nov-23	Dec-23	Jan-24	Feb-24	Mar-24
Numerator	1972			734			1,372			2,792			
Denominator	2175			750			1,463			3,071			
Actual	90.7%			97.9%			93.8%			90.9%			
Target	95%			95%			95%			95%			95%

10. Day Services: % of hospital discharges to Social Care which occur at the weekend

Definition: Of the total number of patients discharged from hospital to a Social Care hospital team, the % that were discharged at the weekend

Frequency / Reporting Basis: Monthly

Source: BO Report - Hospital Discharges

Note: Includes all clients who had a hospital workflow on mosaic including those clients who passed away in hospital

Current Year	2022/23	2023/2024											
		Apr-23	May-23	Jun-23	Jul-23	Aug-23	Sep-23	Oct-23	Nov-23	Dec-23	Jan-24	Feb-24	Mar-24
Numerator	1,150	102	89	93	78	74	86	92	52	119			
Denominator	9,037	590	605	586	554	541	565	573	563	617			
Actual	13%	17%	15%	16%	14%	14%	15%	16%	9%	19%			

11. Hospital Discharges With Social Care Team Involvement

Number of discharges

Definition: Discharged clients where social care teams help facilitate the discharge

Frequency / Reporting Basis: Monthly

Source: BO Report: Hospital Discharges

Note: Includes all clients who had a hospital workflow on mosaic including those clients who passed away in hospital

Current Year	2022/23	2023/2024											
		Apr-23	May-23	Jun-23	Jul-23	Aug-23	Sep-23	Oct-23	Nov-23	Dec-23	Jan-24	Feb-24	Mar-24
18-64	970	65	74	78	52	54	52	58	54	71			
65+	9,214	627	620	601	502	487	513	515	509	546			
Unknown	0	0	0	0	0	0	0	0	0	0			
Total Number	10,184	692	694	679	554	541	565	573	563	617			
% of 65+	90%	91%	89%	89%	91%	90%	91%	90%	90%	88%			

12. Discharges into planned pathway routes

Definition: The pathway that a client has been discharged from hospital into. Pathway definitions are Pathway 0- : simple discharge, no input from health / social care, Pathway 1-:support to recover at home; able to return home with support from health and/or social care, Pathway 2: Rehabilitation in a bedded setting, Pathway 3:For people who require bed-based 24-hour care

Frequency / Reporting Basis: Monthly

Note: Includes all clients who had a hospital workflow on mosaic including those clients who passed away in hospital

Current Year	2022/23	2023/2024											
		Apr-23	May-23	Jun-23	Jul-23	Aug-23	Sep-23	Oct-23	Nov-23	Dec-23	Jan-24	Feb-24	Mar-24
Discharges into Pathway-0	2,202	150	149	167	116	111	103	141	147	168			
Discharges into Pathway-1	3,342	292	279	262	237	227	236	226	210	229			
Discharges into Pathway-2	479	39	40	28	29	26	38	25	25	21			
Discharges into Pathway-3	1,613	118	114	114	99	102	99	97	107	108			
Other	1,457	93	112	108	73	75	89	84	74	91			

13. Capacity of planned pathway routes
Definition: The expected capacity to be discharged into the pathways vs the actual pathway route. Pathway definitions are Pathway 0-: simple discharge, no input from health / social care, Pathway 1-: support to recover at home; able to return home with support from health and/or social care, Pathway 2-: Rehabilitation in a bedded setting
Frequency / Reporting Basis: Monthly
Note: Includes all clients who had a hospital workflow on mosaic including those clients who passed away in hospital

Current Year	2022/23	2023/2024											
		Apr-23	May-23	Jun-23	Jul-23	Aug-23	Sep-23	Oct-23	Nov-23	Dec-23	Jan-24	Feb-24	Mar-24
Expected Capacity into Pathway-0	-	-	-	-	-	-	-	-	-	-	-	-	-
Actual into Pathway- 0	24%	22%	21%	25%	21%	21%	18%	25%	26%	27%			
Expected Capacity into Pathway-1	-	-	-	-	-	-	-	-	-	-	-	-	-
Actual into Pathway- 1	37%	42%	40%	39%	43%	42%	42%	39%	37%	37%			
Expected Capacity into Pathway-2	-	-	-	-	-	-	-	-	-	-	-	-	-
Actual into Pathway- 2	5%	6%	6%	4%	5%	5%	7%	4%	4%	3%			
Expected Capacity into Pathway-3	-	-	-	-	-	-	-	-	-	-	-	-	-
Actual into Pathway- 3	18%	17%	16%	16%	18%	19%	18%	17%	19%	18%			

14. Carers Supported by Carers Service and Adult Care (Rate per 100,000)
Definition: The total number of Carers Supported by Lincolnshire County Council in the last 12 months
Frequency / Reporting Basis: Quarterly / Rolling 12 month period
Source: Corporate Plan (Carers Strategy) (SALT LTS003 total)

Current Year	2022/23	2023/2024											
		Apr-23	May-23	Jun-23	Jul-23	Aug-23	Sep-23	Oct-23	Nov-23	Dec-23	Jan-24	Feb-24	Mar-24
Actual	1,579			1,588			1,560			1,588			
Target	1,730			1,730			1,730			1,730			
Performance	-9%			-8%			-10%			-8%			

15. Trusted Assessors: Hospital Bed Days Saved
Definition: The number of assessments completed by workers, actual discharges that have taken place and total bed days saved by workers
Frequency / Reporting Basis: Quarterly
Source: Lincolnshire Care Association
Notes: Please note Days saved in Q1 may not be accurate due to legacy Covid 19 issues and accelerated discharges.

Current Year	2023/2024												
	Apr-23	May-23	Jun-23	Jul-23	Aug-23	Sep-23	Oct-23	Nov-23	Dec-23	Jan-24	Feb-24	Mar-24	
Completed Assessments	132	123	110	119	160	102	135	143	171				
Actual Discharges	58	47	60	47	63	59	66	58	74				
Bed Saved	233	197	147	283	333	265	332	345	432				
Bed Days Saved (in quarter)	233	430	577	627	763	881	930	942	1,109				
Bed Days Saved (YTD)	233	430	577	860	1,193	1,458	1,790	2,135	2,567				